

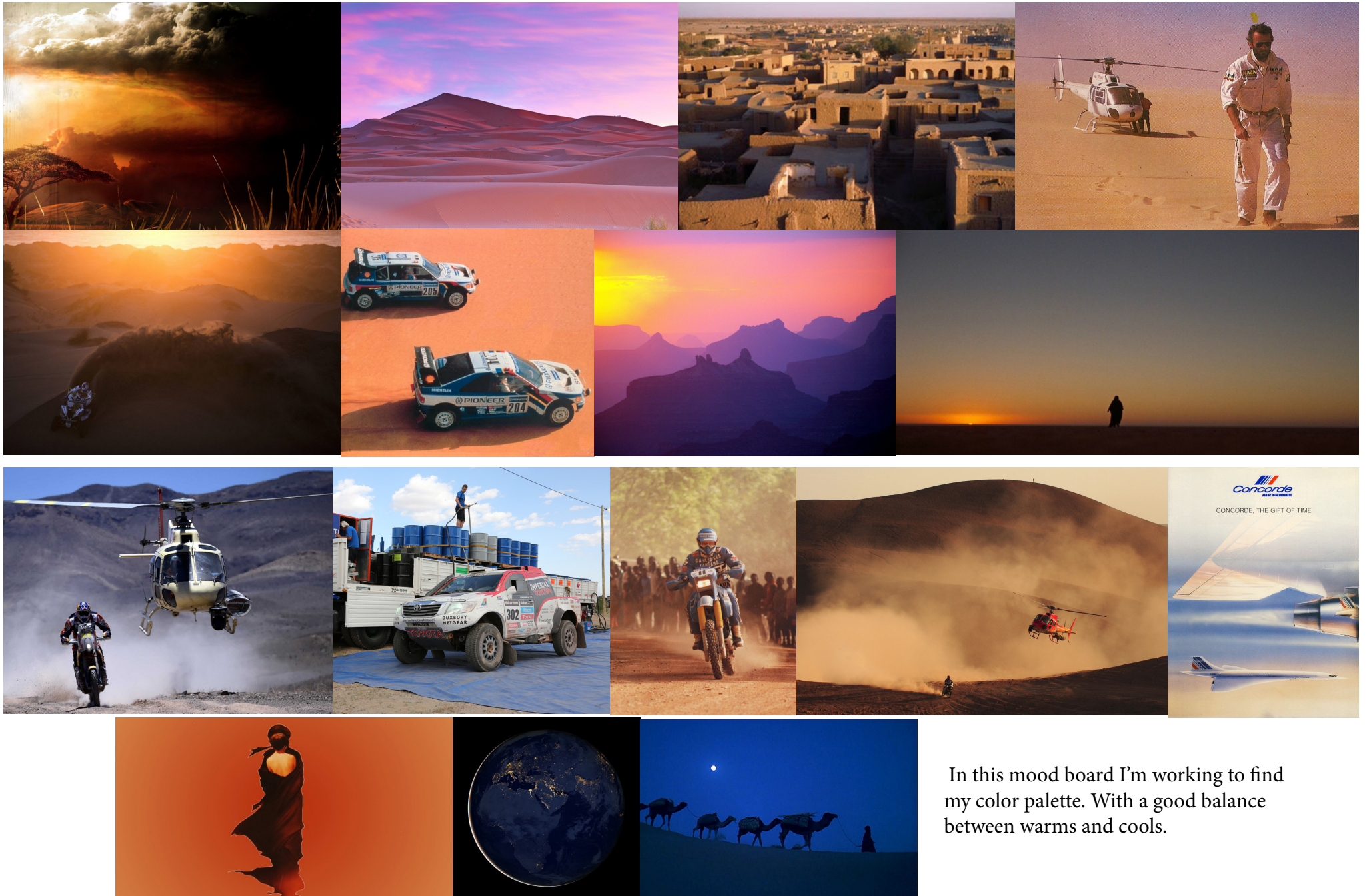
MOOD BOARD &
REFERENCES

MATTHEW FURBER
ITGM 505



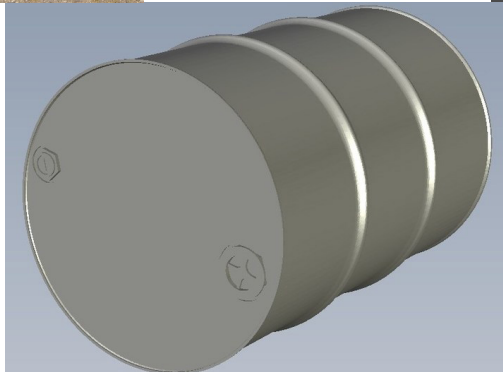
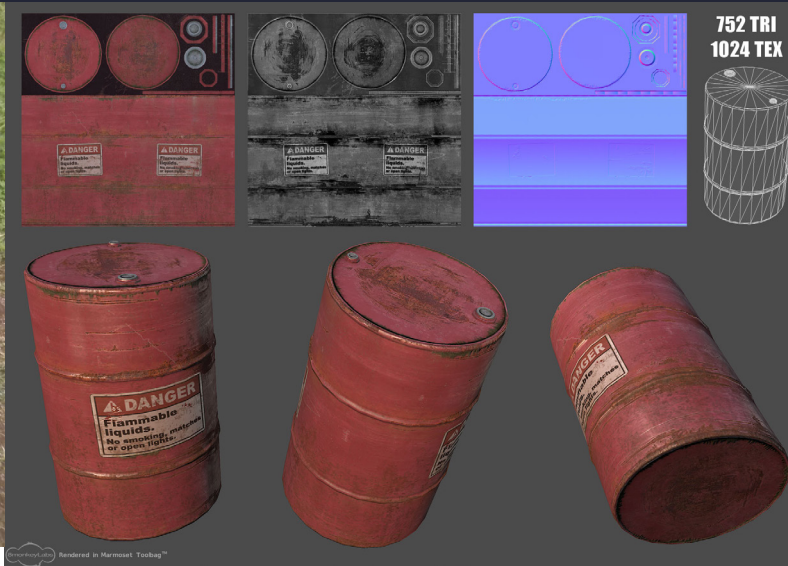
MOOD BOARD

Influenced by the author Paul Bowles, I am fascinated with the lone adventurer in the desert. I wanted to relate concepts of post-colonialism/Orientalism, and spiritual rite of passage to the Dakar Rally races through the Sahara in the late 1970s and early 1980s.



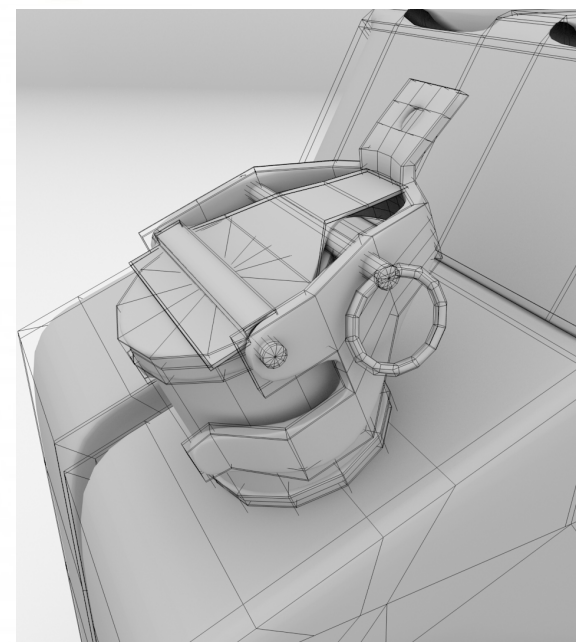
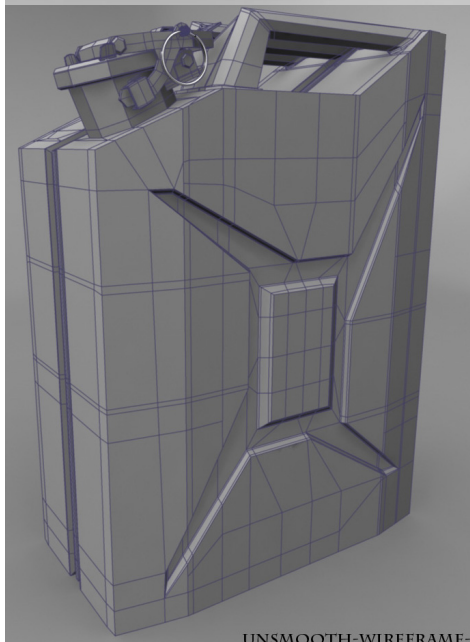
In this mood board I'm working to find my color palette. With a good balance between warm and cool.

OIL DRUM



Oil Drums are a great metaphor for progress and the 20th century. Their decay and pockmarks of rust seem also to represent the negative aspects of the industrial age; waste and consumption. I wanted the colors to be garish and ill-fitted to the natural world around them, i.e. something alien to the landscape.

METAL JERRY CAN



To an adventurer a Jerry Can represents life itself, especially for a motorcycle rider. They carry oil, gas, and most importantly, water. Though some of the references are painted, I want the can to be gleaming in raw steel, a beacon for life as the sun hits it.

ALLEYS & WALL TEX

Compared to the metal objects, these walls are natural and muted.



SMALL HOMES

Again muted colors. Simplicity, and a dramatic contrast between the newer squared construction and the traditional rounded homes.



k photo



TREES

The Acacia Tree, the Date Palm and the Saharan Olive tree.



CROPS & GRASS

Blooms, leaf structures, flowers and grasses on the edges of an oasis.

